

Plank Frame

~ Barn ~

Construction

Plank Frame

~ Barn ~

Construction

**The Project Gutenberg eBook of Plank Frame Barn
Construction**

This eBook is for the use of anyone anywhere in the United States and most other parts of the world at no cost and with almost no restrictions whatsoever. You may copy it, give it away or re-use it under the terms of the Project Gutenberg License included with this eBook or online at www.gutenberg.org. If you are not located in the United States, you will have to check the laws of the country where you are located before using this eBook.

Title: Plank Frame Barn Construction

Author: John L. Shawver

Release date: May 21, 2021 [eBook #65399]

Most recently updated: October 18, 2024

Language: English

Other information and formats:
www.gutenberg.org/ebooks/65399

Credits: Charlene Taylor and the Online Distributed Proofreading Team at <https://www.pgdp.net> (This file was produced from images generously made available by The Internet Archive)

*** START OF THE PROJECT GUTENBERG EBOOK
PLANK FRAME BARN CONSTRUCTION ***

Plank Frame Barn Construction

BY JOHN L. SHAWVER

DAVID WILLIAMS COMPANY, Publishers
232-238 William Street, New York
1904

COPYRIGHTED 1904,
BY DAVID WILLIAMS COMPANY.

PREFACE.

This matter was originally presented in the columns of *Carpentry and Building*, in response to continued requests for information concerning the plank frame system of construction, which for many years past has been growing in popularity in various sections of the country, more particularly the Central West. The author has given a great deal of attention to the subject, having been associated with the construction of plank frame barns for a long period, and he is, therefore, competent to discuss the matter from the standpoint of the practical builder. Barns of the character indicated have been extensively erected through various sections of the West, and it is with a view of presenting valuable data concerning the method of construction that this little work has been compiled. In the course of his articles the author points out the advantages of the form of construction referred to and describes wherein there is a saving of time, labor and material, an important consideration, especially in sections of the country where timber for building purposes is not in plentiful supply.

Constructing a Plank Frame Barn.

BY JOHN L. SHAWVER.

The growing interest in the plank frame barn, as manifested by inquiries which have emanated from many quarters, calls for specific information which will enable every builder and farmer to avail himself of the many advantages offered by this system of construction. The system has been in use in Central Ohio for the past 20 years, and has been rapidly growing in favor wherever people have had an opportunity of investigating its merits. During these years the system, which was at first somewhat crude and undeveloped, has been gradually improved, until to-day, after many of the most severe tests, it is believed to have reached very near perfection as regards economy of material and labor, strength of frame, convenience of arrangement and durability of structure. The advantages offered by this method of construction are:

1. A saving in timber of from 40 to 60 per cent.—a not small item in many localities where timber for building purposes has become a scarce article.
2. An opportunity to employ for the building of barns timber that could scarcely receive consideration if solid timber mortise and tenon frames were to be built.
3. A saving in the cost of sawing, cutting and hauling of about one-half of the timber.
4. A saving in cost of framing, ranging from 50 to 90 per cent., according to the plan of the building and the efficiency of the builders.
5. In cases where farmers' wives are expected to board and lodge the builders, a saving in labor and vexation of two or three weeks' unnecessary time for framing old style barns.

6. A riddance of practically all of the interior timbers, which are usually an interference with the use of the horse forks and hay slings, as well as a source of constant vexation at threshing time and all other times when the barn is in use.

7. The full benefit of the self supporting arch roof, a construction of combined triangles, long braces and perpendicular timbers.

8. Durability, arising from the fact that there are no mortises in which moisture may accumulate and cause the tenons to decay.

9. The strongest possible support for the track of the hay fork or sling.

10. Ease of addition to the main building should any ever be required.

Changes and variations in plans need cause no loss of timber, as is certain to be the case where a bill of materials has already been placed on the ground. If a piece of timber is too long the piece cut off is used at some point, though perhaps not over 18 inches in length and containing only 2 or more feet of stuff. Suppose we cut off 18 inches of an 8×8 we have lost 8 feet of lumber, which is worthless for any purpose save for fire wood. If a given piece is too short it is spliced in a moment's time and no loss of strength is sustained. In an old style framing if a piece was too short it required considerable labor to remedy the matter, and a loss of both timber and strength was sustained.

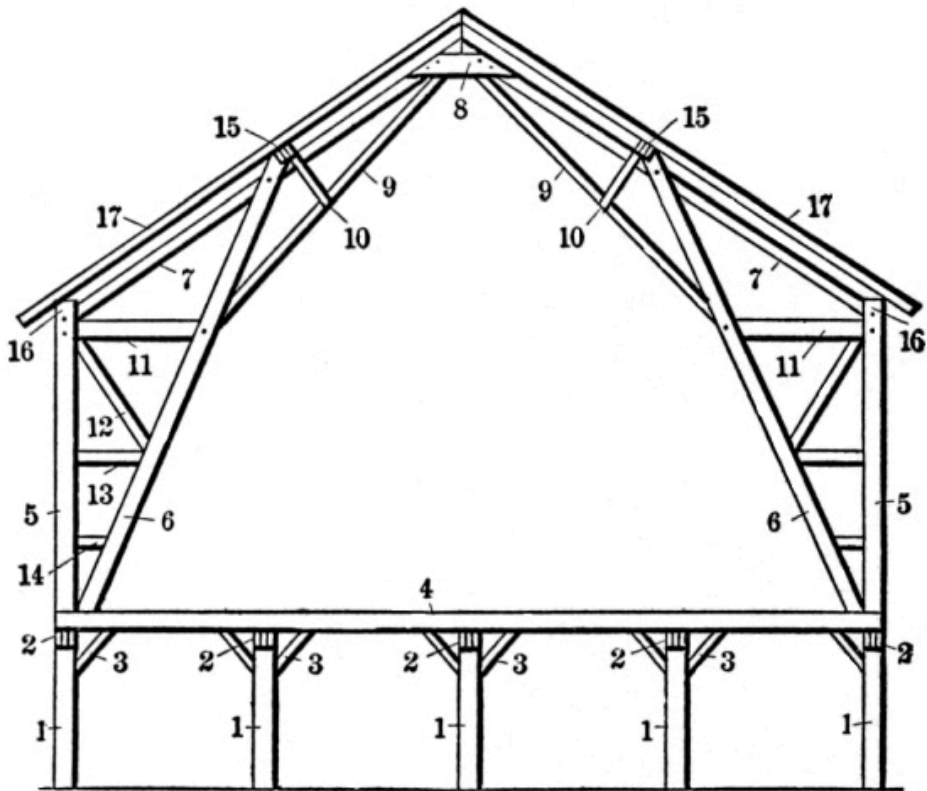


Fig. 1.—Interior Bent of Plain Gable Barn with Basement.

Herewith are illustrated two bents of a barn, [Fig. 1](#), showing a plain gable barn with basement. Referring to it, 1 1 1 are posts of basement bent, consisting of five 2×8 planks, two of which are 8 feet long and three of which are 7 feet 2 inches. Upon these rest the joist bearers, marked 2 2 2, which consist of three planks 2×10 , extending lengthwise of the barn. These basement bents are thoroughly braced by a method which will be illustrated hereafter. The braces 3 3 3 are made of two 2×4 inch stuff the required length, with a short piece of the same material forming a clamp brace somewhat similar in shape to a clothes pin. The sill of the superstructure, marked 4, consists of two 2×8 inch plank, with 6-inch space between them. The posts 5 5 are made of two 2×8 inch plank, with intervening 2-inch space. The purlin posts, 6 6, are made of two 2×8 inch plank, with intervening space; 7 7 are roof supports, consisting of a 2×8 inch plank. The collar beams 8 are two 2×12 inch plank with intervening 2-inch space; 9 9 are sub-supports, made of a 2×6 inch plank; 10 10 are stays

of two 2×4 inch plank, with intervening 2-inch space; 11 11 are the main ties of one 2×8 inch piece; 12, 13 and 14 are braces and ties of 2×6 inch plank; 15 15 are purlin plates, made of two 2×8 inch plank, with intervening 2-inch space into which couplings and braces enter.

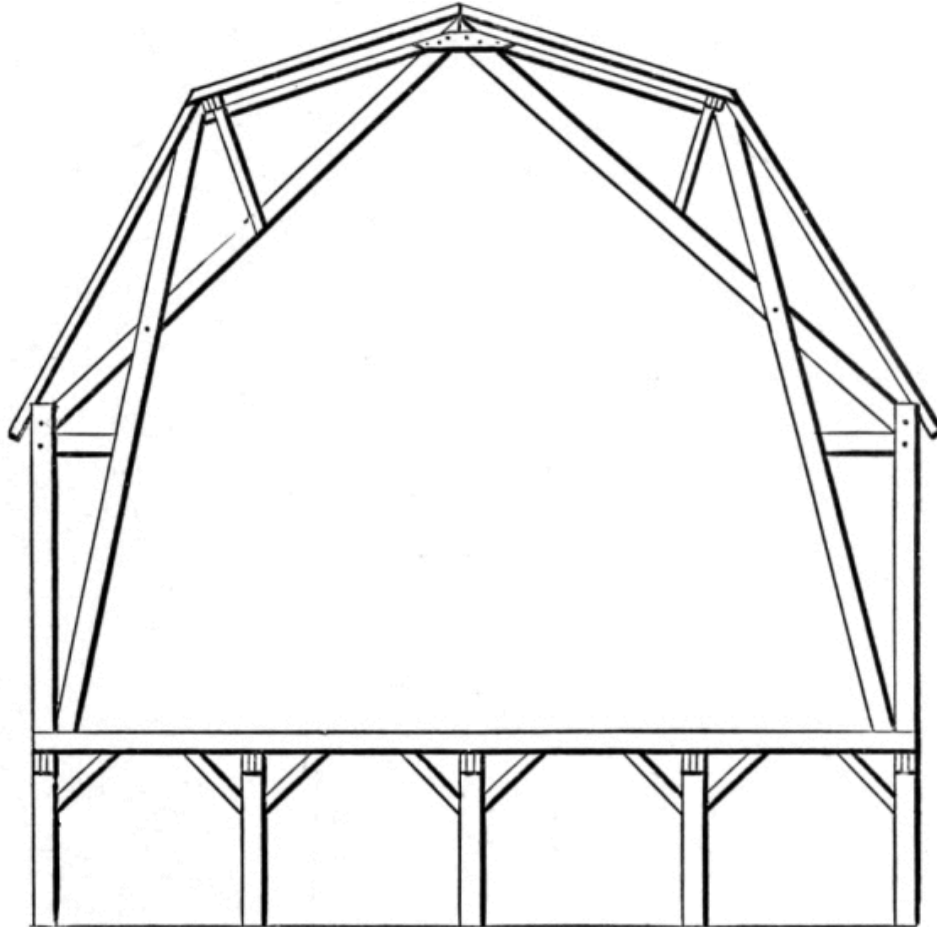


Fig. 2.—Barn Bent, Showing Gambrel Roof Construction.

At 16 16 the main plates, made of two 2×8 inch plank, are placed into a V-trough and inverted over the top of the post. The rafters 17 17 may be spliced on the purlin plates. The topmost intersections are bolted, as shown by means of the dots. The upper ends of the purlin posts are cut down 4 inches, on a line parallel with the roof supports, and again at right angles with the first cut, forming a saddle, into which are placed the purlin plates.

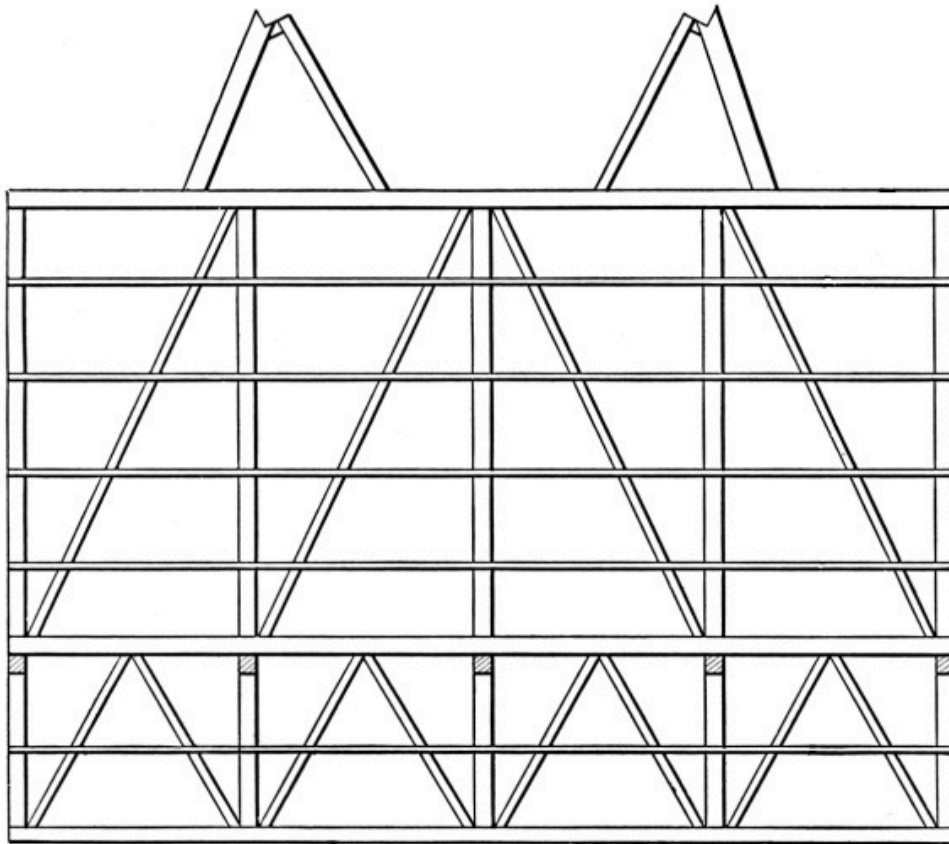


Fig. 3.—Outside View of End Bent of Superstructure and Basement Bents.—Scale, 3-32 Inch to the Foot.

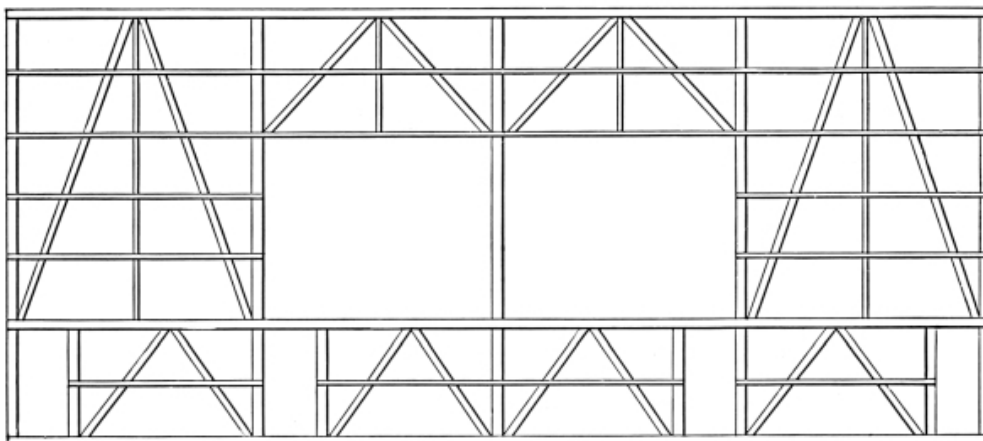


Fig. 4.—Side View of Plank Frame Barn.—Scale, 3-32 Inch to the Foot.

In [Fig. 2](#) is presented a view of an interior bent of a gambrel roof basement barn, which is constructed on the same general principles as shown in the previous figure. Hip roofs,

gothic roofs, etc., are as readily provided for as either gable or gambrel roofs, so any man's taste may be fully met in this respect.

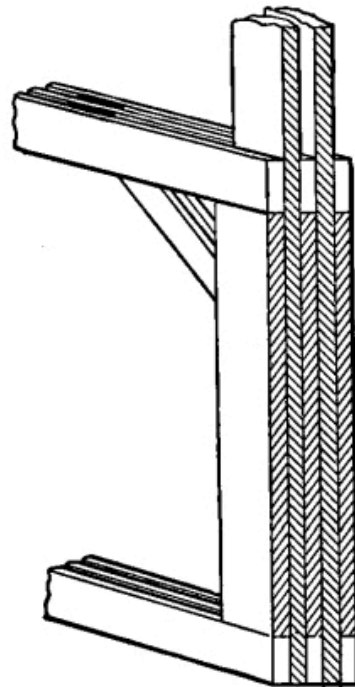


Fig. 5.—Detail Showing Section of Frame.—Scale, $\frac{1}{4}$ Inch to the Foot.

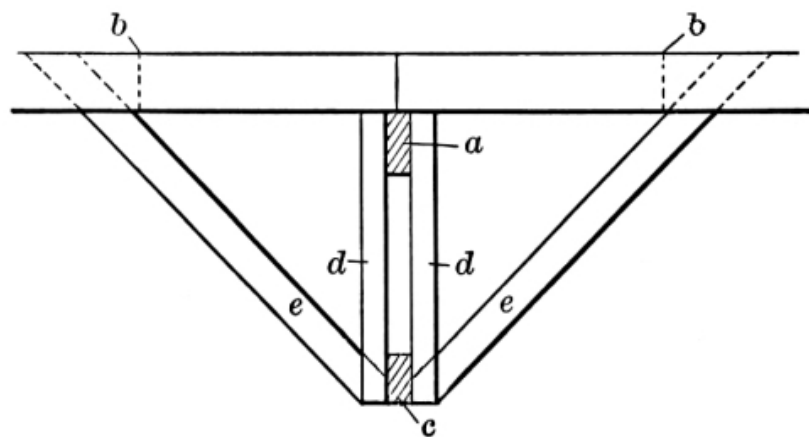


Fig. 6.—Section of Purlin Plate.—Scale, $\frac{1}{4}$ Inch to the Foot.

An outside view of the end bent of the superstructure and an end view of all the basement bents are shown in [Fig. 3](#) of the illustrations. The braces in the basement are permitted to

extend up and between the sills of the superstructure, thus binding both basement and superstructure into one solid frame work. In the interior of the basement, where long braces will not interfere with the arrangement or convenience, they are to be preferred to short ones, but where short braces are necessary they are inserted in such a manner as to give greater strength than when mortised in as is usually done.

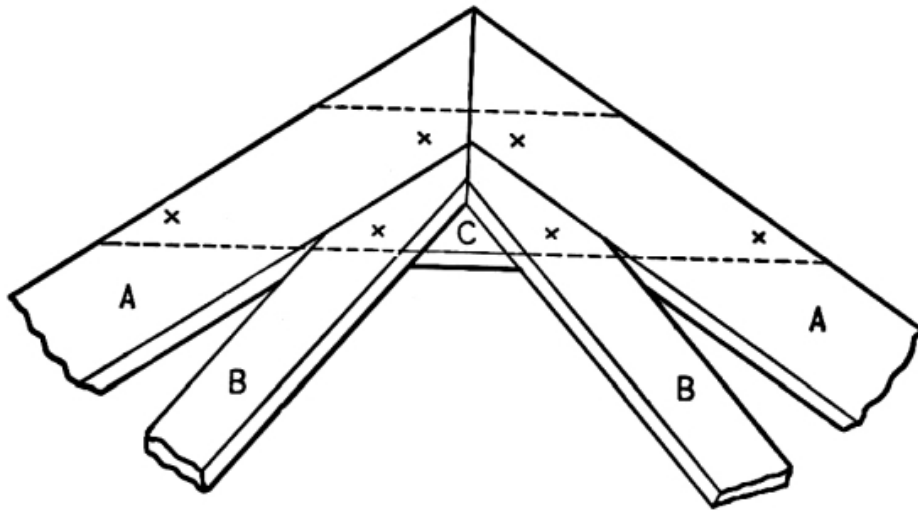


Fig. 7.—Detail at Peak of Barn.—Scale, $\frac{1}{2}$ Inch to the Foot.

A side view of the frame, which is of such a character as to fully explain itself, is presented in [Fig. 4](#). The plate is made of two 2×8 plank spiked together to form a trough and inverted over the tops of the posts. The manner of constructing the bents of the basement is indicated in [Fig. 5](#). If the posts can stand on solid pillars of stone no sills are necessary, and the fillers extend down to the lower ends of the posts and up to the joist bearers. A side view of the purlin plates, which are made of two 2×8 or 2×10 plank with a 2-inch space between them, is shown in [Fig. 6](#). The coupling or splicing block extends either way from the roof support *a* to the dotted lines *b b*. At *c* is represented a sectional view of the sub-support, to which the stays *d d* are secured, and also the lower end of the braces *e e*. This arrangement gives sufficient strength to the purlin plates to sustain a slate or any other roof desired. [Fig. 7](#) shows the manner in which the peak of the arch is constructed. The roof supports, which are usually of 2×8 , are indicated by

A A. The sub-supports, usually of 2×6 plank, are indicated by B B, while the dotted lines represent the collar beams, C, constructed of 2×12 inch plank, there being one on either side and bound together by $\frac{1}{2}$ -inch carriage bolts $6\frac{1}{2}$ inches in length, their position being indicated by the small crosses.

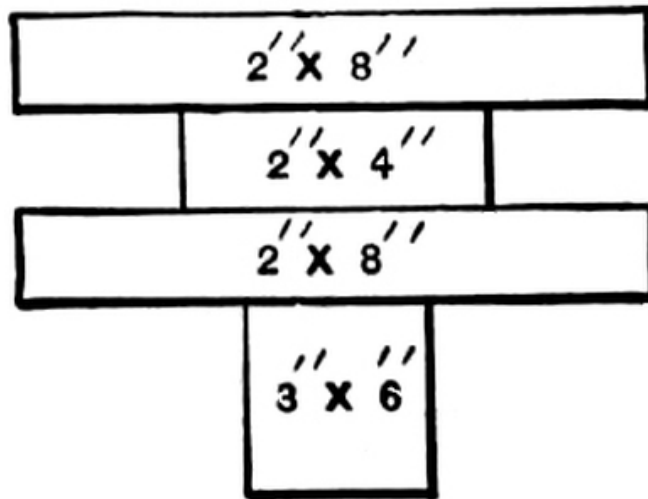


Fig. 8.—Detail Showing Construction of Posts in End Bent of [Fig. 3](#).

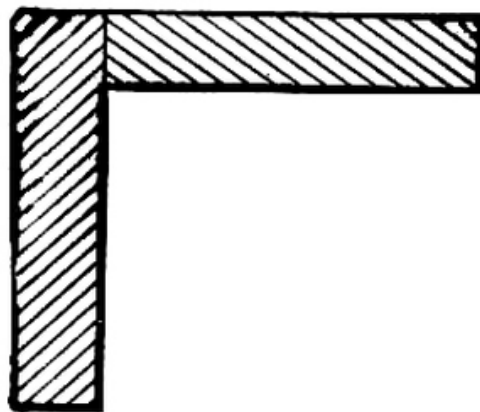


Fig. 9.—Sectional View of Plate.

Three posts of the end bent, shown in [Fig. 3](#), are constructed of two 2×8 plank, one 2×4 and one 3×6 , all as indicated by the cross section in [Fig. 8](#) of the engravings.

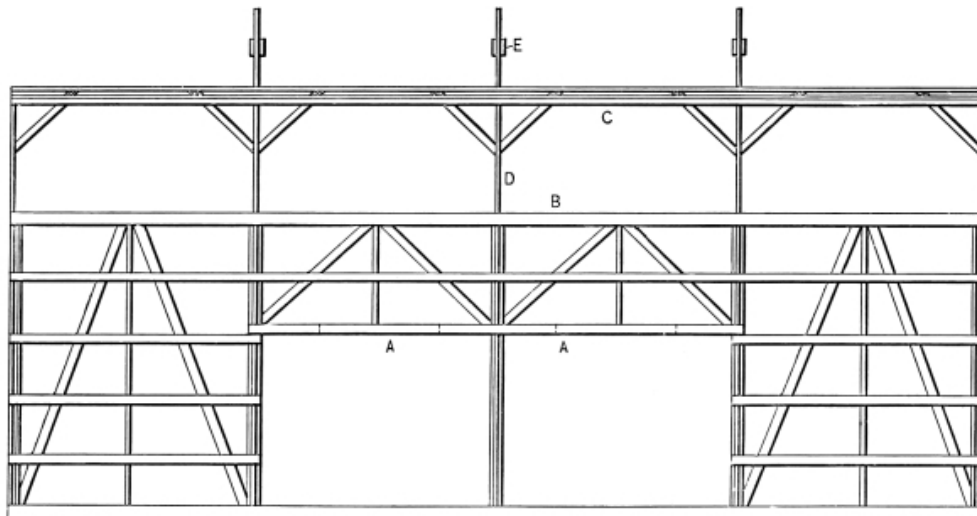


Fig. 10.—Side Elevation of Barn Having Two Driveways and Bay at Either End.

It will be noticed that all of this work is easily and quickly done and that there is not only a saving in the timber, but also in the labor. As an example of the time required to erect a frame, I would state that I was recently called to another county to assist in building a basement barn, 40 × 80 feet in size, 8-foot basement and 16-foot superstructure, with plain gable roof. With three carpenters we commenced work on Wednesday morning, and on Saturday of the same week we raised the barn complete. In other words, it took four carpenters three days to frame a barn 40 × 80 × 24 feet.

In [Fig. 10](#) is shown a side view of a barn with two driveways and bay at either end. A A are duplicated on inside of posts, with bridge blocks at dotted lines; B' is main plate; C is purlin plate of two 2 × 8 plank set at right angles with roof and also braced at right angles; D is roof supports, forming the arch of the barn, and E the collar beams. [Fig. 11](#) shows interior bent of a “ground” barn with decks above driveway. Should stables be desired in one or both ends joist bearers may extend entire width of barn.

There are doubtless many who would like some evidence of the strength, durability and popularity of this system of barn building, and I therefore submit a few facts in relation to these points.

First Test of Strength.—A small model made of linden strips 3-16 inch thick and $\frac{1}{2}$, $\frac{3}{8}$ and $\frac{1}{4}$ in inch width, made on a scale of $\frac{1}{2}$ to 12 and representing a barn 40×60 , with 8-foot basement and 20-foot superstructure, was found strong enough to support four men of average weight.

Second Test.—Several years ago a number of persons at a barn raising were discussing the frail appearance of the frame, and a test was made with chains and levers in an effort to crush the frame by drawing at opposite angles, but without the slightest effect.

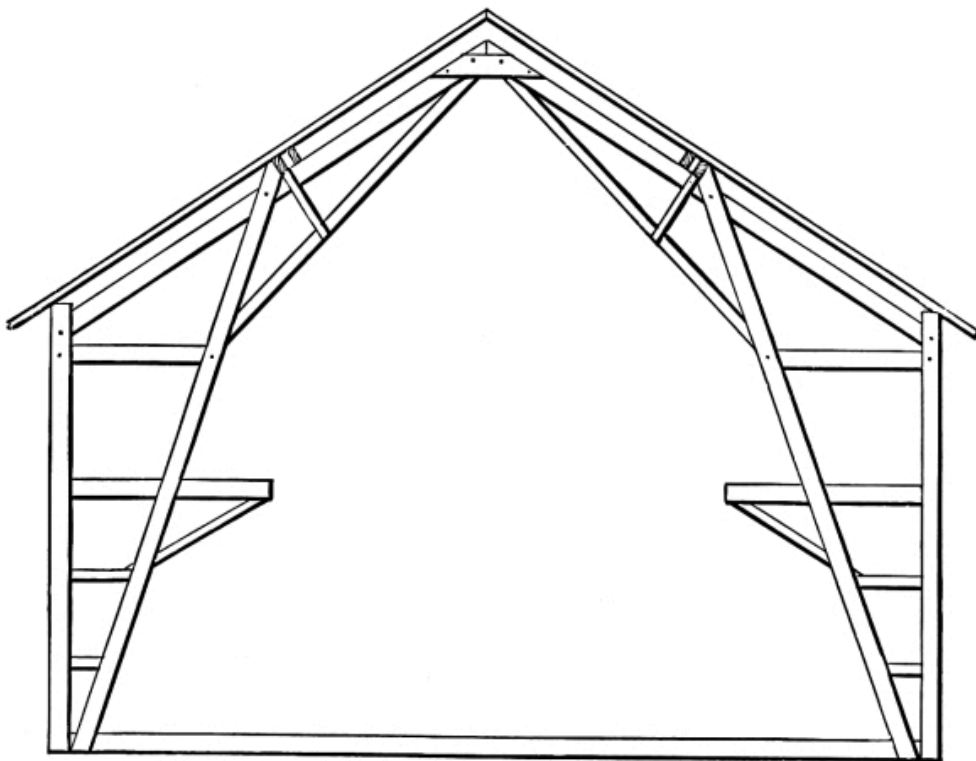


Fig. 11.—Interior Bent of “Ground” Barn with Decks Above Driveway.

Another example is found in a barn which was put up with a minimum quantity of spikes, because the owner did not wish to take time to go to town for more. The barn has been standing 14 years, within which time a number of destructive wind storms have passed over it without damage, though much damage to fences, forests and buildings resulted in the vicinity.

As evidence of the rapidity with which the framing may be done, I will refer to a basement barn, 40×80 , 24 feet to the square, recently erected in Union County, Ohio. I began with three carpenters on Wednesday morning, and on Saturday of the same week the barn was raised complete. We were compelled to work under the disadvantages of considerable mud on the newly graded foundation site, necessity of carrying the timber some distance, and the short days in mid November. None of the hands had any previous experience in this work, so had to learn as they proceeded.

A large dairy barn was built the last week of October, 1896, just out of New York City. It is 100×36 , with 8-foot basement and 16-foot superstructure. We had four house carpenters and two laborers. Began work Monday morning, but were delayed by the non-arrival of the spikes till nearly noon. The basement bents were each 100 feet in length, and there were nine bents in the superstructure. Both basement and superstructure were raised on Friday of same week in six hours with the help of 30 men.

Still another example may be given to show the difference between the plank frame and the mortise and tenon frame. With three helpers I framed a barn, 40×72 , with 20-foot posts, while two carpenters, one of them a foreman, framed the sills for a corn crib, 5×40 .

The system has been introduced into 32 States and some fair sized barns have been built in this way. One in Kentucky, 56×100 ; one in Colorado, 60×70 ; one in Wisconsin, 40×120 , with wing 40×60 ; one in Ontario, 56×96 , and one in Virginia, 60×100 . I have yet to learn of any who, having built strictly to specifications, are dissatisfied with the frame. On the contrary, we are frequently in receipt of letters from those who have thus built stating that they are delighted not only because they have saved both money and timber, but at the same time have obtained a thoroughly strong frame without the usual interior timbers, which are so much in the way in handling hay or grain.

I shall be glad to have the friendly criticism of practical builders given in the columns of *Carpentry and Building*. Any

suggestions which may lead to further improvements in the system will be appreciated very much, and due credit will be given to those who suggest them. It will be seen that the system is especially adapted to large grain and hay barns, to cover barnyards, which are becoming so popular in many sections of the country, to tool sheds, tobacco barns, amphitheaters, &c.

While there is not so large a saving in the timber of the basement as in the superstructure, there is yet a fair saving of timber even here, and at the same time there is great saving of labor. The timbers are employed only where they can serve a useful purpose, and special effort is made to so place the timbers as to secure the maximum amount of strength with the smallest possible amount of timber.

The following communications were brought out as the result of Mr. Shawver's invitation to the readers of *Carpentry and Building*:

Bracing a Basement Barn Built on the Plank Frame System.

From E. S. H., Connecticut.—I have been reading the articles of Mr. Shawver on barn framing with a great deal of interest, and I am desirous of obtaining full instructions in regard to bracing the interior of a basement barn: also a complete bill of materials for the frame of such a barn, 40 × 60 feet in area, basement 8 feet high and superstructure 20 feet high. The roof is of the gable pattern, one-third pitch. There is also a bay in each end and a double driveway.

Answer.—In referring to the above inquiry, Mr. Shawver submits the following information, accompanied by the illustrations presented herewith: The sketches here given will explain in detail the manner of inserting the braces and the way in which they are made. Of course, when long braces will not interfere with the desired use of the space they are preferred to short ones, but short ones properly inserted will give the same rigidity to the plank frame that braces of similar length will give to a mortise and tenon frame. The braces C C of [Fig. 1](#) are inserted in the bents as the latter are constructed, but the brace shown in [Fig. 2](#) is not inserted until the barn is raised.

In basement barns the joist bearer, A of [Fig. 1](#), is made to extend lengthwise of the building, and the bents of the superstructure being placed crosswise we find the sill of a bent of a superstructure as represented at F F. But in ground barns the joist bearers extend crosswise of the barn, and the post B is permitted to extend up through the joist bearer about 7 inches. Two posts are then spiked to this projecting portion, one on either side, and thus again the brace shown in [Fig. 2](#) may be inserted if thought necessary. If, however, the braces are properly inserted in the side walls of the frame the short braces may safely be omitted in ground barns.

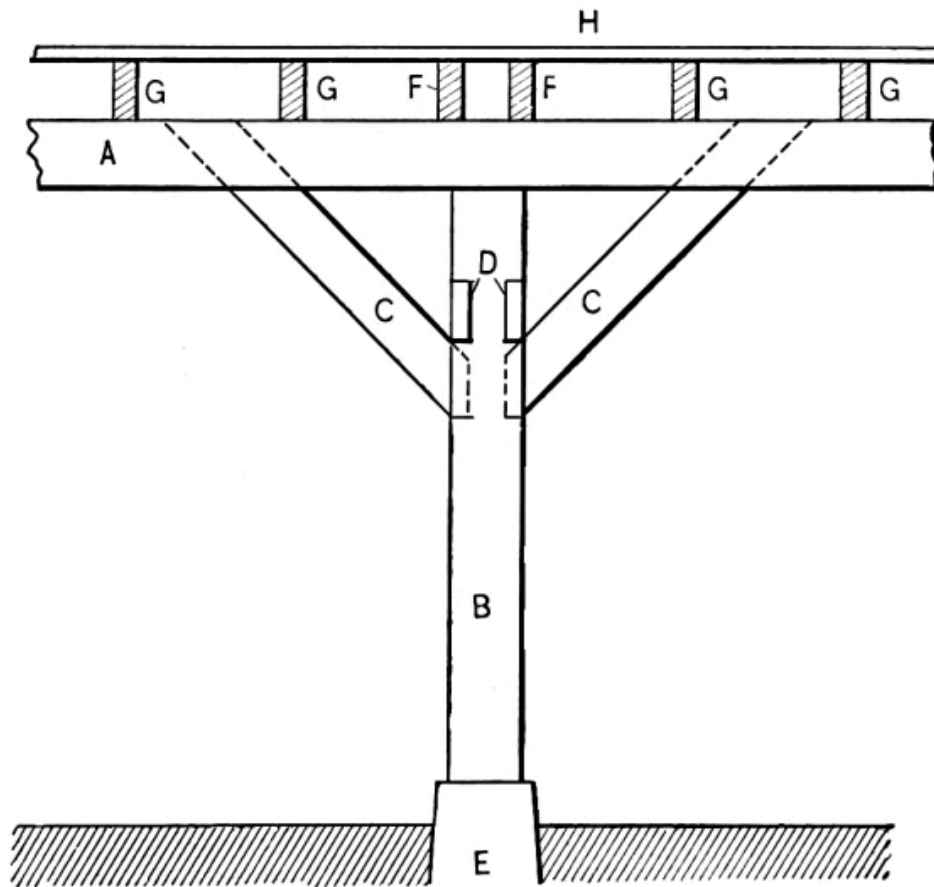


Fig. 1.—Showing Method of Bracing.

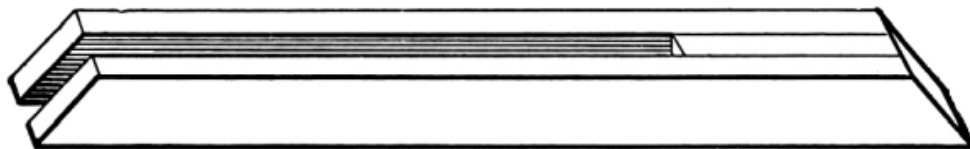


Fig. 2.—One Form of Brace Employed.

The following is a bill of materials for a plank frame basement barn, 36 × 60 feet, basement 8 feet, with wall on one side, 16-foot superstructure, with a 23-foot bay at each end and a 14-foot driveway in the middle. Roof one-third pitch, plain gable, decks over driveway if permissible. Interior posts of basement to stand on stone pillars.

BILL OF MATERIALS.

Basement: First Bent.

	Ins.	Ins.	Ft.
2 sills	2 ×	8 ×	60
(or six 2 × 8 × 20)			
12 posts	2 ×	8 ×	8
4 door posts	2 ×	6 ×	8
6 post fillers	2 ×	8 ×	8
4 nailers	2 ×	6 ×	12
1 nailer	2 ×	6 ×	14
3 joist bearers	2 ×	10 ×	60
(may use 14s and 24s.)			
10 braces	2 ×	6 ×	10

Bents 2, 3 and 4 similar.

12 posts	2 ×	8 ×	8
18 post fillers	2 ×	8 ×	8
20 braces	2 ×	4 ×	6
3 joist bearers	2 ×	10 ×	60

Ends of Basement.

8 sills	2 ×	8 ×	9
(or four 2 × 8 × 18)			
4 nailers	2 ×	6 ×	18
(or eight 2 × 8 × 9)			
4 nailers	2 ×	8 ×	18
16 braces	2 ×	6 ×	10
56 braces	2 ×	4 ×	6
28 brace blocks	2 ×	4 ×	16

Superstructure: Two End
Bents.

4 sills	2 ×	8 ×	36
(or eight 2 × 8 × 18)			
12 nailers	2 ×	6 ×	18
4 beams	2 ×	8 ×	36
(or eight 2 × 8 × 18)			

20 posts	$2 \times 8 \times 16$
10 post fillers	$2 \times 4 \times 16$
8 braces	$2 \times 6 \times 18$
8 purlin posts	$2 \times 8 \times 8$
8 braces	$2 \times 4 \times 9$
2 gable ties	$2 \times 6 \times 18$
6 stiffeners	$3 \times 6 \times 16$

Two Interior Bents.

4 sills	$2 \times 8 \times 36$
	(or eight $2 \times 8 \times 18$)
4 sills	$2 \times 8 \times 2$
8 posts	$2 \times 8 \times 16$
8 purlin posts	$2 \times 8 \times 24$
	(or twelve $2 \times 8 \times 16$)
4 roof supports	$2 \times 8 \times 22$
4 sub-supports	$2 \times 6 \times 17$
4 collar braces	$2 \times 12 \times 5$
8 stays	$2 \times 4 \times 3$
4 ties	$2 \times 8 \times 8$
4 ties	$2 \times 6 \times 5$
4 ties	$2 \times 6 \times 4$
4 braces	$2 \times 6 \times 8$

Two Floor Bents.

4 sills	$2 \times 8 \times 36$
	(or eight $2 \times 8 \times 18$)
4 sills	$2 \times 8 \times 2$
8 posts	$2 \times 8 \times 16$
8 purlin posts	$2 \times 8 \times 24$
4 roof supports	$2 \times 8 \times 22$
4 sub-supports	$2 \times 6 \times 17$
4 collar braces	$2 \times 12 \times 5$
8 stays	$2 \times 4 \times 3$
4 ties	$2 \times 8 \times 8$

4 ties	2 × 6 × 5
4 ties	2 × 6 × 4
4 braces	2 × 6 × 9
8 joist bearers	2 × 8 × 8

Side Timbers.

4 sills	2 × 8 × 23
2 sills	2 × 8 × 14
24 nailers	2 × 6 × 12
4 nailers	2 × 8 × 14
8 plates	2 × 8 × 23
4 plates	2 × 8 × 14
8 purlins	2 × 8 × 23
4 purlins	2 × 8 × 14
8 couplings	2 × 8 × 8
4 couplings	2 × 8 × 4
4 braces	2 × 4 × 12
16 braces	2 × 4 × 7
8 deck joist	2 × 8 × 14

Floors, siding, roofing, doors, etc., will be the same as in other barns of same dimensions.

ESTIMATED COST OF FRAMING.

Foreman, \$2.50 per day, 3 days	\$7.50
Two journeymen, \$2 per day, 3 days	6.00
Two apprentices, \$1.25 per day, 3 days	<u>3.75</u>
Total	\$17.25
Raising and inserting braces, 1 day	<u>5.75</u>
Total	\$23.00

Cost of completing same as other barns of same dimensions and style of finish.

A Plank Frame Applied to a Skating Rink.

From N. B., Sussex, N. B.—We want to erect an auditorium, 50 × 200, with 16-foot posts and 12-foot sheds at each side for offices, waiting rooms, saloon, etc. We want galleries all around and a large band stand at one end, suspended from the roof. The building is to be used for a skating rink in winter and for public meetings during the summer. Will the plank frame system described in *Carpentry and Building* be suitable for the frame?

Answer.—The above inquiry was submitted to Mr. Shawver, who contributed the recent articles on plank frame construction, and in reply he says:

The plank frame is admirably adapted to such a building as that described, and can be quite cheaply constructed. In [Fig. 1](#) of the sketches is shown one of the bents near the end on which the band stand is located, indicating the manner in which it is suspended from the roof by the rods A A, together with truss rod B. The galleries appear at either side, above which and beneath the eaves are the windows. If lighted by dormer windows, or if artificial light is employed, the shed roofs may be of the same pitch and a continuation of the roof of the main building, in which case the galleries may extend back beneath the roof of the sheds, and they need not extend out further than the purlin posts. The sketch, [Fig. 2](#), shows an interior bent without the band stand. The end bents will be constructed in a manner similar to that shown in Figs. 1 and 2 of my article on plank frame barns. A 200-foot building should have 17 bents placed 12½ feet apart.

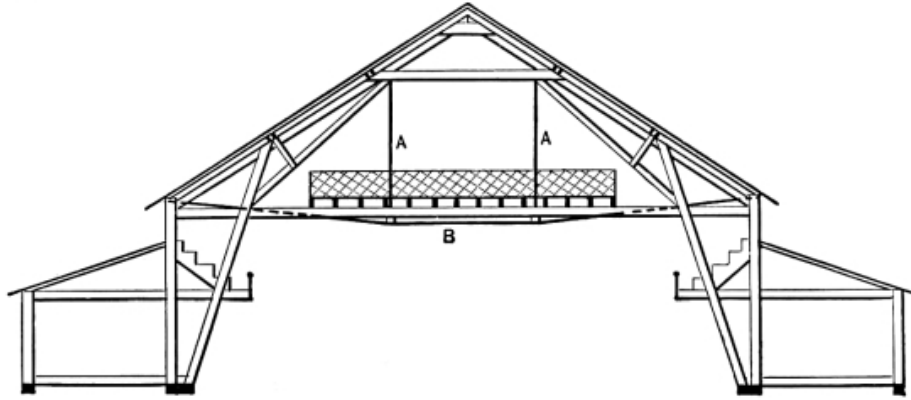


Fig. 1.—Bent Near the Band Stand.

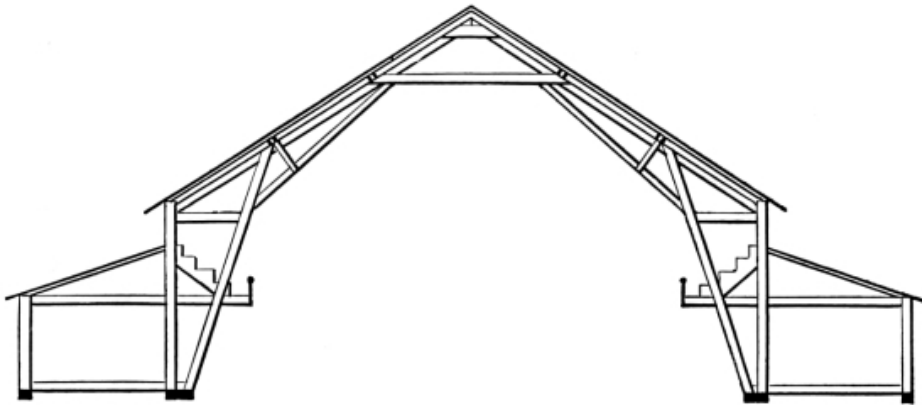
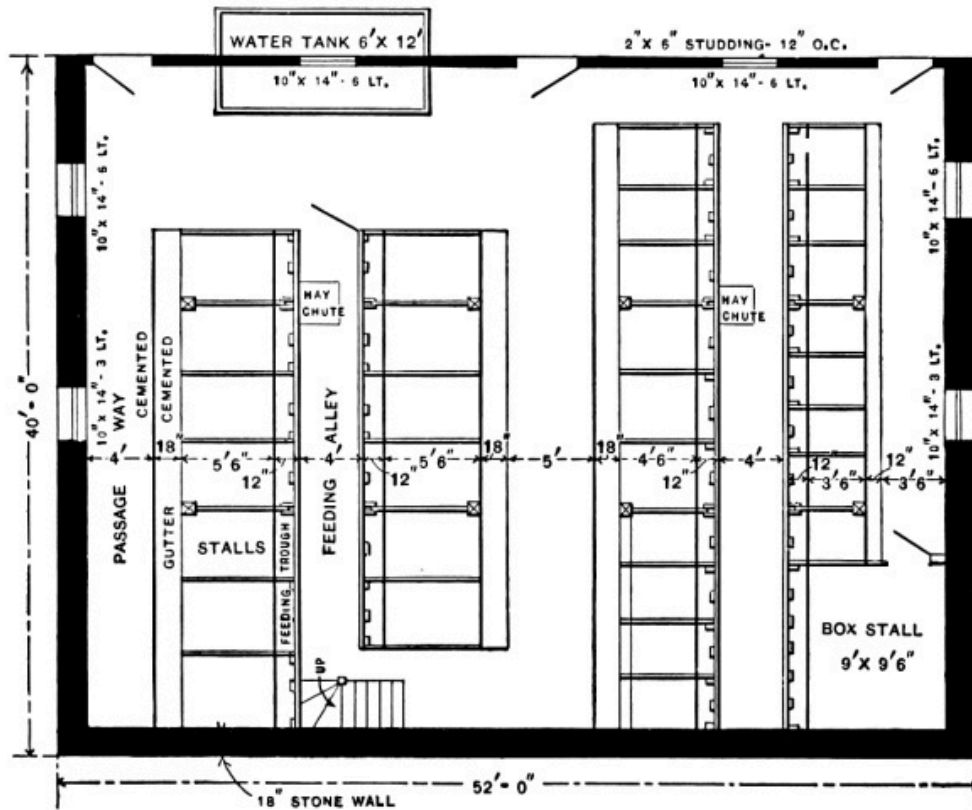


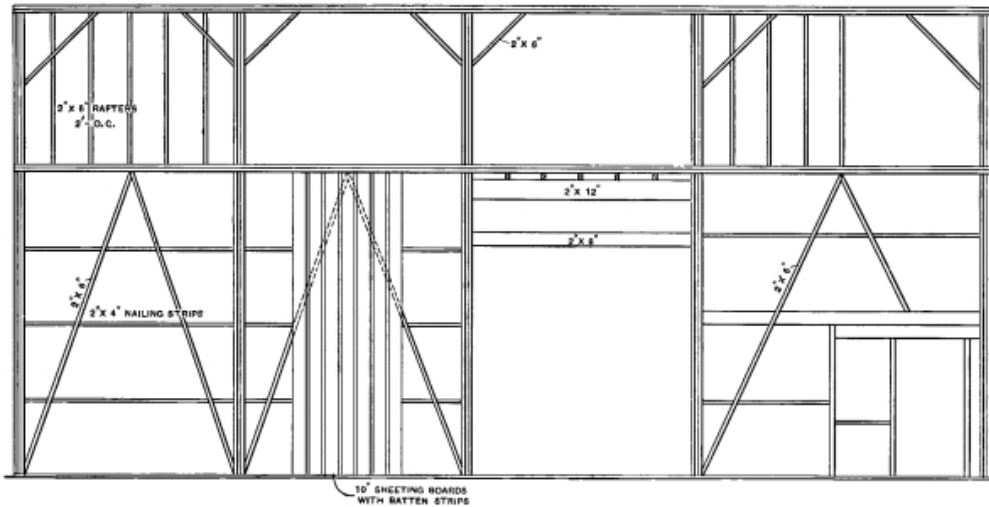
Fig. 2.—An Interior Bent.

Construction of Plank Frame Basement Barn.



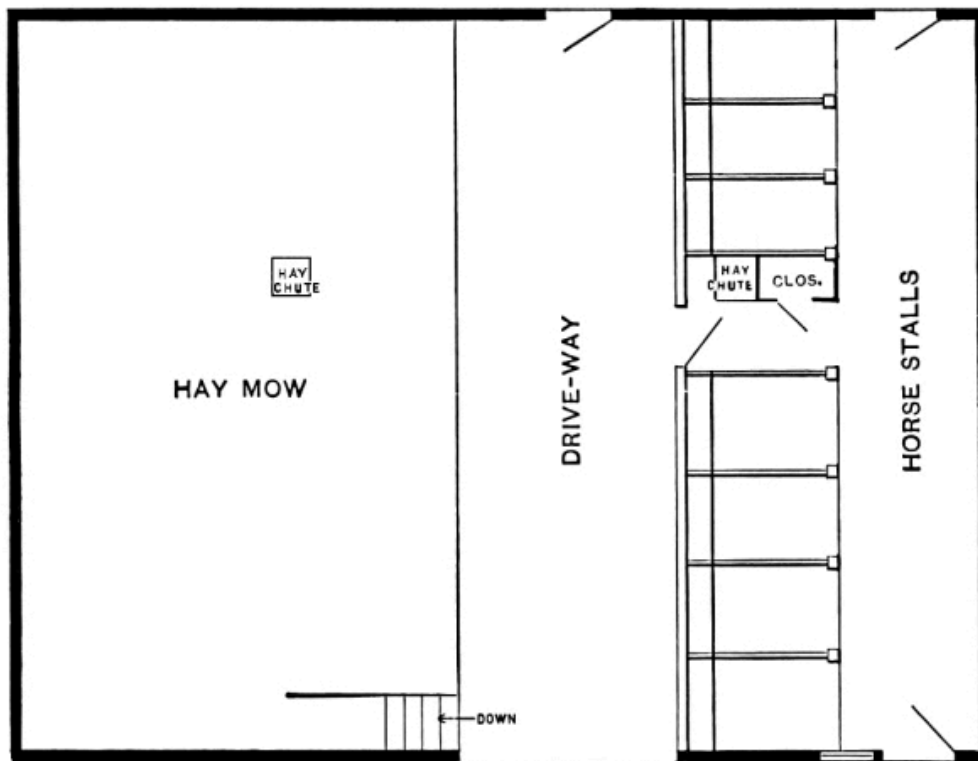
Basement Plan.—Scale, 1-16 Inch to the Foot.

From S. H., Minneapolis, Minn.—I would like to have the readers experienced in plank frame barn construction comment upon the plans of the basement barn which I send herewith and from which I intend to build next summer. I would like very much to know the weak points of the barn and the best way to remedy them. I think the drawings showing the plans and details are so clear as to practically explain themselves.



Elevation of Front Framing of Barn.—Scale, $\frac{1}{8}$ Inch to the Foot.

Construction of Plank Frame Basement Barn.—Floor Plans.—Scale, 1-16 Inch to the Foot.



Main Floor.—Scale, 1-16 Inch to the Foot.

Criticism of Plank Frame Barn Construction.

From JOHN L. SHAWVER, *Bellefontaine, Ohio.*—In response to the wish of “S. H.,” Minneapolis, Minn., I offer a few suggestions in connection with his proposed plank frame basement barn. It is well, indeed, that he should insist on knowing what he is doing, for many have made blunders because they attempted to build plank frames without having first investigated the proper method of construction. Too many guess at it. As pioneers in this work, we started, 25 years ago, on small structures, and month by month studied and contrived until a system was evolved that is adapted to barn structures of any reasonable size. Each point has been carefully tested as we proceeded, and if not fully satisfactory was discarded for something better. We now have over 7000 structures in some 44 States and provinces, some of them quite large, and have received many gratifying testimonials as to their strength, durability and cheapness.

The floor plans submitted by “S. H.” are very good in design and arrangement, save that the hay chutes are made to appear directly over one of the main girders. Of course, this he would discover and rectify. Should it be difficult to obtain 8×8 stuff for posts and 8×10 for girders, the former may very easily be constructed of two 2×8 's and two 2×4 's, box pattern, thus saving something in materials and risk from dry rot. The girders might be made of two 4×10 's, or four 2×10 's, leaving an air space of 2 inches in the middle and saving the necessity of making mortises.

The drawings indicate the use of two 2×12 's and one 2×8 for cross sills, the 2×8 being flat. In my opinion, the 2×8 is needless. The plates are all flatwise, while they must sustain much weight. We prefer purlin plates set on edge at right angles with the combined pressure of both sets of rafters. The main plates we make of three 2×6 inch, or 2×8 inch, according to the size of the structure when on edge to sustain

the weight and two to sustain the outward pressure of the roof and the contents of the building. In this case, the purlins should incline 45 degrees.

The drawings of the correspondent indicate that the nailers are cut to fit between the posts, in which case they must be mortised, gabled or toe nailed. The first two require unnecessary work, while the latter is not strong enough. If the bents are constructed in three sections, they will be tedious to raise in position. If completed before raising, they will be weak at the purlin plate. The drawings indicate also that staging would be required in setting the upper frame, and that quite a large amount of the work is done as the frame is being raised. In our experience we never use any staging, and we do most of the work from the ground before beginning to set for the frame. Most men can work more rapidly on the ground, with all materials handy, than they can aloft, where materials must be drawn up with ropes. I believe "S. H." can save enough on labor alone to pay his expenses to go to some point and see one of our plank frame constructions. Besides, he will find wherein he can greatly improve upon his method of construction. Those who are within convenient reach to do so can visit the barn of Dr. W. I. Chamberlain, near Cleveland, Ohio, which is easily accessible by railroad, while the doctor, who is one of the editors of the *Ohio Farmer*, takes great delight in showing his barn to visitors. This barn, which is 40 × 82 feet in size, required four carpenters two and a half days to frame and two hours and fifteen minutes to raise.

We do not usually give name and address of our patrons, because it leads to much inconvenience to them. Should any of the readers write to Dr. Chamberlain, I would suggest that they inclose a stamped envelope, properly addressed, for reply.

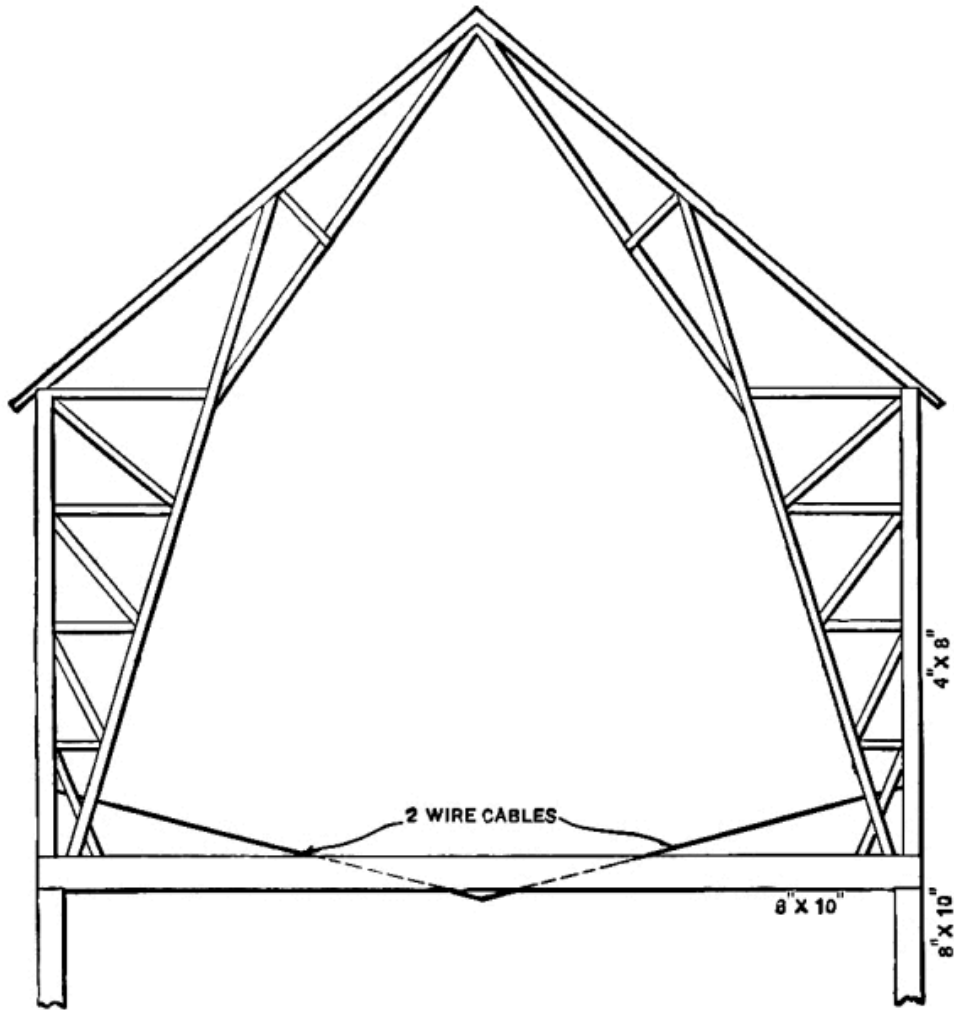
Criticism of Plank Frame Barn Construction.

From J. M. B., Monroeton, Pa.—In the December issue of *Carpentry and Building*, page 327, the correspondent “S. H.” of Minneapolis wants to know the weak points of his barn frame, a sketch of which was presented in connection with his communication. I think one weak point is what he calls the plate in the gable, which is made of two 2×8 inch pieces, equal to a 4×8 inch, with a span of at least 30 feet between purlin posts, which are only 2×6 inches. In my opinion, with the hay mow filled with hay, the gable will bulge or spring out, as the weight, 45 to 50 tons, will exert quite a pressure. As to the remedy I am not so clear. He might use a flat truss or a beam large enough to stand the pressure; one, say, 16 inches wide at the center and tapering to 8 inches at each end. I will say, in conclusion, that I have had no experience with plank frames.

Is the Barn Frame of Sufficient Strength?

From C. G., Vergennes, Vt.—I send herewith a rough sketch of bent of barn which I intend to put up in the spring. It is 30 feet wide and has 26-foot posts. What I wish to know is this: Is the truss strong enough to carry the load that will be put upon it? I would like to have the “wood butchers” take hold of it and tear it apart and tell me what to put in its place.

From JOHN L. SHAWVER, Bellefontaine, Ohio.—Permit me to offer a substitute for the barn frame proposed by the correspondent “C. G.” of Vergennes, Vt., in the March issue of the paper. His timber trusses take up too much room, and at the same time the timbers are too expensive for this day and age. We place a little more timber in the joist bearer and prefer it in a different shape. He suggests 7×8 inches, and this would be 30 feet in length. We would use three 2×10 's, and could use any lengths to make the 30 feet; consequently our timbers could be purchased at much less cost. Instead of the 7×8 inch truss timbers we would use two wire cables made of galvanized wire, seven strands, and doubled. While we would use a little heavier posts in the stables, the posts of the superstructure would contain only about one-half as much material, but this, too, we would prefer of different shape. In place of the 7×8 inch we would use two 2×8 's, and instead of the beam we would prefer the arch and the angling purlin posts, and thus have the interior entirely free from all timbers.



Is the Barn Frame of Sufficient Strength?

After 20 years' experience in building barns without the cross beams it would require peculiar conditions to induce us to use them, for they are continuously in the way, both when storing away hay or grain and when getting these out again for the thresher or for the feeding of stock. The upper portion of the frame submitted by "C. G." does not show any braces, and we are at a loss to know if there is to be none, or if these were omitted because it is not that portion of the structure that is under consideration. Let me say, however, that that is one of the most prevalent mistakes in the construction of a barn. There are too few braces, and the first baby tornado that happens to pass that way will "lay it out in fine shape." While we use plenty of braces, they are usually only 2 × 6 inches, and so do not take timber very rapidly. The geometrical

triangle is the strongest figure one can secure, and it is with that idea always in mind that we do our barn work.

Bents for 12-Sided Plank Frame Barn.

From J. D., Ubly, Mich.—I send herewith a rough sketch, [Fig. 1](#), showing one of the bents of a 12-sided plank frame barn, and would like to have the architectural readers of the paper state whether or not it will be strong enough for the purpose, and, if not, wherein changes can be made to advantage.

Note.—With a view to obtaining the opinion of an expert who has had long experience in the construction of plank frame barns, we submitted the inquiry of our correspondent above to John L. Shawver, who furnishes the following in reply:

In the first place, the purlin posts in the sketch of the correspondent are so sloping that while they brace well they are not in position to sustain the most weight, and these with the roof supports are so long that they have to be spliced. While this is easily done in the case of posts, it is not so readily performed with supports, and, when so done, it will not present as attractive an appearance as would otherwise be the case.

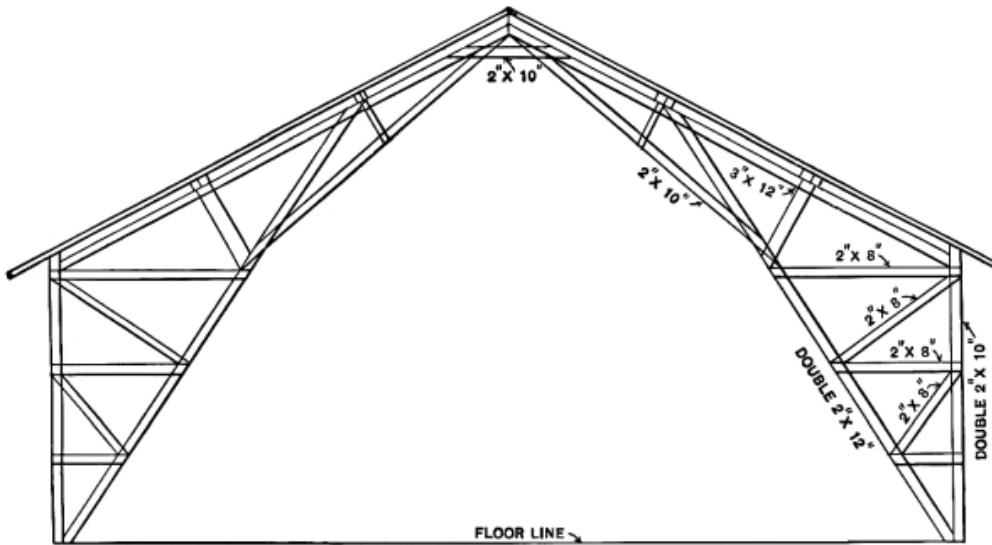


Fig. 1.—Elevation of Bent Submitted by “J. D.”

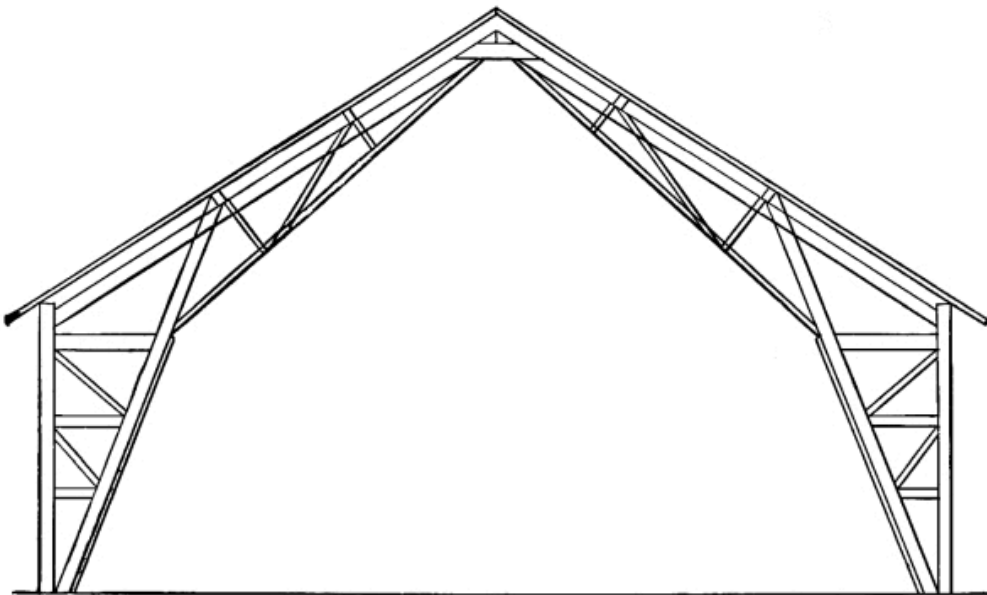


Fig. 2.—One Form of Plank Frame Suggested by Mr. Shawver.

In the second place, one of the weakest points about the barn is the shape. It is true it would be a novelty in most communities, but, like the round barns, is wasteful of material. It is out of the question to place joists, rafters, flooring, sheathing, roofing, &c., on barns of this shape without much waste of both materials and labor. Then, too, it is next to

impossible to provide for satisfactory lighting or ventilation, both of which are essential features in every up to date barn.

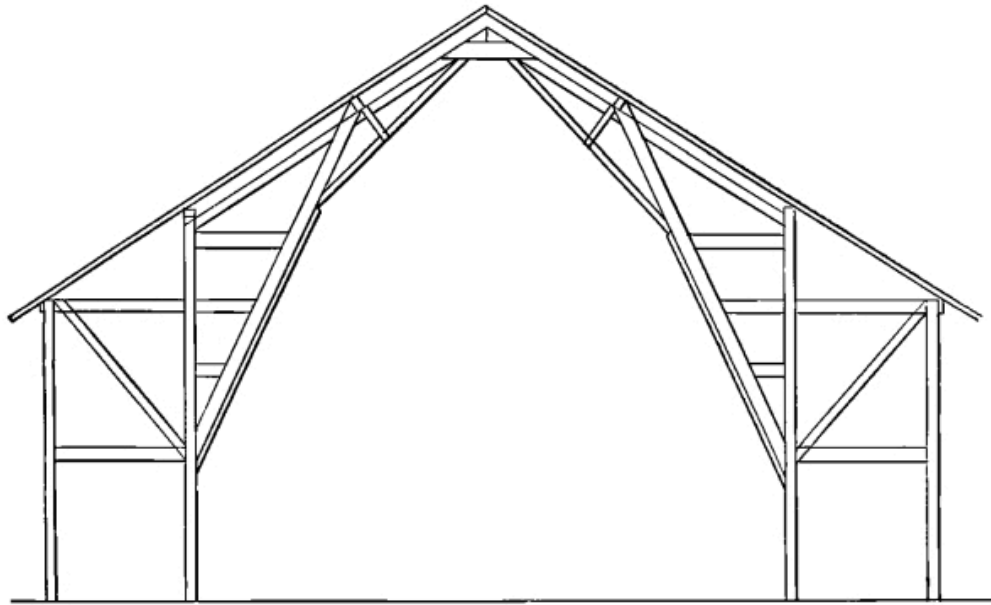


Fig. 3.—The Preferable Style of Framing.

The frame construction indicated in [Fig. 2](#) is stronger, and at the same time gives more open space in the interior, this being secured by running the purlin posts up to the first purlin plate, instead of to the second, and supporting the second plate on the truss brace. This saves in the lengths of the purlin posts, but requires the same length of supports and longer sub-supports.

The form of construction indicated in [Fig. 3](#) is, in my opinion, preferable to either of the others, if it is found that the vertical posts set in 10 feet will not in any way interfere with the purpose of the structure. In this case all the timbers are either shortened or placed in such shape that they may be spliced without in any way weakening the structure. Whichever form may be used by the correspondent, it is important in bents or arches of this size that the purlin posts should be placed on the inner edge with 2×6 , which will add materially to the strength of the frame, and at the same time prevent any tendency to spring sideways either in the raising or from the pressure of the hay or grain within after the building is completed.

Transcriber's Notes:

The illustrations have been moved so that they do not break up paragraphs and so that they are next to the text they illustrate.

Typographical and punctuation errors have been silently corrected.

*** END OF THE PROJECT GUTENBERG EBOOK
PLANK FRAME BARN CONSTRUCTION ***

Updated editions will replace the previous one—the old editions will be renamed.

Creating the works from print editions not protected by U.S. copyright law means that no one owns a United States copyright in these works, so the Foundation (and you!) can copy and distribute it in the United States without permission and without paying copyright royalties. Special rules, set forth in the General Terms of Use part of this license, apply to copying and distributing Project Gutenberg™ electronic works to protect the PROJECT GUTENBERG™ concept and trademark. Project Gutenberg is a registered trademark, and may not be used if you charge for an eBook, except by following the terms of the trademark license, including paying royalties for use of the Project Gutenberg trademark. If you do not charge anything for copies of this eBook, complying with the trademark license is very easy. You may use this eBook for nearly any purpose such as creation of derivative works, reports, performances and research. Project Gutenberg eBooks may be modified and printed and given away—you may do practically ANYTHING in the United States with eBooks not protected by U.S. copyright law. Redistribution is subject to the trademark license, especially commercial redistribution.

START: FULL LICENSE

THE FULL PROJECT GUTENBERG™ LICENSE

PLEASE READ THIS BEFORE YOU DISTRIBUTE OR USE THIS WORK

To protect the Project Gutenberg™ mission of promoting the free distribution of electronic works, by using or distributing this work (or any other work associated in any way with the phrase “Project Gutenberg”), you agree to comply with all the terms of the Full Project Gutenberg License available with this file or online at www.gutenberg.org/license.

Section 1. General Terms of Use and Redistributing Project Gutenberg electronic works

1.A. By reading or using any part of this Project Gutenberg electronic work, you indicate that you have read, understand, agree to and accept all the terms of this license and intellectual property (trademark/copyright) agreement. If you do not agree to abide by all the terms of this agreement, you must cease using and return or destroy all copies of Project Gutenberg electronic works in your possession. If you paid a fee for obtaining a copy of or access to a Project Gutenberg electronic work and you do not agree to be bound by the terms of this agreement, you may obtain a refund from the person or entity to whom you paid the fee as set forth in paragraph 1.E.8.

1.B. “Project Gutenberg” is a registered trademark. It may only be used on or associated in any way with an electronic work by people who agree to be bound by the terms of this agreement. There are a few things that you can do with most Project Gutenberg electronic works even without complying with the full terms of this agreement. See paragraph 1.C below. There are a lot of things you can do with Project Gutenberg electronic works if you follow the terms of this agreement and help preserve free future access to Project Gutenberg electronic works. See paragraph 1.E below.

1.C. The Project Gutenberg Literary Archive Foundation (“the Foundation” or PGLAF), owns a compilation copyright in the collection of Project Gutenberg electronic works. Nearly all the individual works in the collection are in the public domain

in the United States. If an individual work is unprotected by copyright law in the United States and you are located in the United States, we do not claim a right to prevent you from copying, distributing, performing, displaying or creating derivative works based on the work as long as all references to Project Gutenberg are removed. Of course, we hope that you will support the Project Gutenberg mission of promoting free access to electronic works by freely sharing Project Gutenberg works in compliance with the terms of this agreement for keeping the Project Gutenberg name associated with the work. You can easily comply with the terms of this agreement by keeping this work in the same format with its attached full Project Gutenberg License when you share it without charge with others.

1.D. The copyright laws of the place where you are located also govern what you can do with this work. Copyright laws in most countries are in a constant state of change. If you are outside the United States, check the laws of your country in addition to the terms of this agreement before downloading, copying, displaying, performing, distributing or creating derivative works based on this work or any other Project Gutenberg work. The Foundation makes no representations concerning the copyright status of any work in any country other than the United States.

1.E. Unless you have removed all references to Project Gutenberg:

1.E.1. The following sentence, with active links to, or other immediate access to, the full Project Gutenberg License must appear prominently whenever any copy of a Project Gutenberg work (any work on which the phrase “Project Gutenberg” appears, or with which the phrase “Project Gutenberg” is associated) is accessed, displayed, performed, viewed, copied or distributed:

This eBook is for the use of anyone anywhere in the United States and most other parts of the world at no cost and with almost no restrictions whatsoever. You may

copy it, give it away or re-use it under the terms of the Project Gutenberg™ License included with this eBook or online at www.gutenberg.org. If you are not located in the United States, you will have to check the laws of the country where you are located before using this eBook.

1.E.2. If an individual Project Gutenberg electronic work is derived from texts not protected by U.S. copyright law (does not contain a notice indicating that it is posted with permission of the copyright holder), the work can be copied and distributed to anyone in the United States without paying any fees or charges. If you are redistributing or providing access to a work with the phrase “Project Gutenberg” associated with or appearing on the work, you must comply either with the requirements of paragraphs 1.E.1 through 1.E.7 or obtain permission for the use of the work and the Project Gutenberg trademark as set forth in paragraphs 1.E.8 or 1.E.9.

1.E.3. If an individual Project Gutenberg electronic work is posted with the permission of the copyright holder, your use and distribution must comply with both paragraphs 1.E.1 through 1.E.7 and any additional terms imposed by the copyright holder. Additional terms will be linked to the Project Gutenberg License for all works posted with the permission of the copyright holder found at the beginning of this work.

1.E.4. Do not unlink or detach or remove the full Project Gutenberg License terms from this work, or any files containing a part of this work or any other work associated with Project Gutenberg.

1.E.5. Do not copy, display, perform, distribute or redistribute this electronic work, or any part of this electronic work, without prominently displaying the sentence set forth in paragraph 1.E.1 with active links or immediate access to the full terms of the Project Gutenberg License.

1.E.6. You may convert to and distribute this work in any binary, compressed, marked up, nonproprietary or proprietary form, including any word processing or hypertext form. However, if you provide access to or distribute copies of a

Project Gutenberg work in a format other than “Plain Vanilla ASCII” or other format used in the official version posted on the official Project Gutenberg website (www.gutenberg.org), you must, at no additional cost, fee or expense to the user, provide a copy, a means of exporting a copy, or a means of obtaining a copy upon request, of the work in its original “Plain Vanilla ASCII” or other form. Any alternate format must include the full Project Gutenberg License as specified in paragraph 1.E.1.

1.E.7. Do not charge a fee for access to, viewing, displaying, performing, copying or distributing any Project Gutenberg works unless you comply with paragraph 1.E.8 or 1.E.9.

1.E.8. You may charge a reasonable fee for copies of or providing access to or distributing Project Gutenberg electronic works provided that:

- You pay a royalty fee of 20% of the gross profits you derive from the use of Project Gutenberg works calculated using the method you already use to calculate your applicable taxes. The fee is owed to the owner of the Project Gutenberg trademark, but he has agreed to donate royalties under this paragraph to the Project Gutenberg Literary Archive Foundation. Royalty payments must be paid within 60 days following each date on which you prepare (or are legally required to prepare) your periodic tax returns. Royalty payments should be clearly marked as such and sent to the Project Gutenberg Literary Archive Foundation at the address specified in Section 4, “Information about donations to the Project Gutenberg Literary Archive Foundation.”
- You provide a full refund of any money paid by a user who notifies you in writing (or by e-mail) within 30 days of receipt that s/he does not agree to the terms of the full Project Gutenberg™ License. You must require such a user to return or destroy all copies of the works possessed in a physical medium and discontinue all use of and all access to other copies of Project Gutenberg™ works.

- You provide, in accordance with paragraph 1.F.3, a full refund of any money paid for a work or a replacement copy, if a defect in the electronic work is discovered and reported to you within 90 days of receipt of the work.
- You comply with all other terms of this agreement for free distribution of Project Gutenberg™ works.

1.E.9. If you wish to charge a fee or distribute a Project Gutenberg™ electronic work or group of works on different terms than are set forth in this agreement, you must obtain permission in writing from the Project Gutenberg Literary Archive Foundation, the manager of the Project Gutenberg™ trademark. Contact the Foundation as set forth in Section 3 below.

1.F.

1.F.1. Project Gutenberg volunteers and employees expend considerable effort to identify, do copyright research on, transcribe and proofread works not protected by U.S. copyright law in creating the Project Gutenberg™ collection. Despite these efforts, Project Gutenberg™ electronic works, and the medium on which they may be stored, may contain “Defects,” such as, but not limited to, incomplete, inaccurate or corrupt data, transcription errors, a copyright or other intellectual property infringement, a defective or damaged disk or other medium, a computer virus, or computer codes that damage or cannot be read by your equipment.

1.F.2. LIMITED WARRANTY, DISCLAIMER OF DAMAGES - Except for the “Right of Replacement or Refund” described in paragraph 1.F.3, the Project Gutenberg Literary Archive Foundation, the owner of the Project Gutenberg™ trademark, and any other party distributing a Project Gutenberg™ electronic work under this agreement, disclaim all liability to you for damages, costs and expenses, including legal fees. YOU AGREE THAT YOU HAVE NO REMEDIES FOR NEGLIGENCE, STRICT LIABILITY, BREACH OF WARRANTY OR BREACH OF CONTRACT EXCEPT THOSE PROVIDED IN PARAGRAPH 1.F.3. YOU

AGREE THAT THE FOUNDATION, THE TRADEMARK OWNER, AND ANY DISTRIBUTOR UNDER THIS AGREEMENT WILL NOT BE LIABLE TO YOU FOR ACTUAL, DIRECT, INDIRECT, CONSEQUENTIAL, PUNITIVE OR INCIDENTAL DAMAGES EVEN IF YOU GIVE NOTICE OF THE POSSIBILITY OF SUCH DAMAGE.

1.F.3. LIMITED RIGHT OF REPLACEMENT OR REFUND

- If you discover a defect in this electronic work within 90 days of receiving it, you can receive a refund of the money (if any) you paid for it by sending a written explanation to the person you received the work from. If you received the work on a physical medium, you must return the medium with your written explanation. The person or entity that provided you with the defective work may elect to provide a replacement copy in lieu of a refund. If you received the work electronically, the person or entity providing it to you may choose to give you a second opportunity to receive the work electronically in lieu of a refund. If the second copy is also defective, you may demand a refund in writing without further opportunities to fix the problem.

1.F.4. Except for the limited right of replacement or refund set forth in paragraph 1.F.3, this work is provided to you ‘AS-IS’, WITH NO OTHER WARRANTIES OF ANY KIND, EXPRESS OR IMPLIED, INCLUDING BUT NOT LIMITED TO WARRANTIES OF MERCHANTABILITY OR FITNESS FOR ANY PURPOSE.

1.F.5. Some states do not allow disclaimers of certain implied warranties or the exclusion or limitation of certain types of damages. If any disclaimer or limitation set forth in this agreement violates the law of the state applicable to this agreement, the agreement shall be interpreted to make the maximum disclaimer or limitation permitted by the applicable state law. The invalidity or unenforceability of any provision of this agreement shall not void the remaining provisions.

1.F.6. INDEMNITY - You agree to indemnify and hold the Foundation, the trademark owner, any agent or employee of the Foundation, anyone providing copies of Project Gutenberg™ electronic works in accordance with this agreement, and any volunteers associated with the production, promotion and distribution of Project Gutenberg™ electronic works, harmless from all liability, costs and expenses, including legal fees, that arise directly or indirectly from any of the following which you do or cause to occur: (a) distribution of this or any Project Gutenberg work, (b) alteration, modification, or additions or deletions to any Project Gutenberg work, and (c) any Defect you cause.

Section 2. Information about the Mission of Project Gutenberg

Project Gutenberg is synonymous with the free distribution of electronic works in formats readable by the widest variety of computers including obsolete, old, middle-aged and new computers. It exists because of the efforts of hundreds of volunteers and donations from people in all walks of life.

Volunteers and financial support to provide volunteers with the assistance they need are critical to reaching Project Gutenberg's goals and ensuring that the Project Gutenberg collection will remain freely available for generations to come. In 2001, the Project Gutenberg Literary Archive Foundation was created to provide a secure and permanent future for Project Gutenberg and future generations. To learn more about the Project Gutenberg Literary Archive Foundation and how your efforts and donations can help, see Sections 3 and 4 and the Foundation information page at www.gutenberg.org.

Section 3. Information about the Project Gutenberg Literary Archive Foundation

The Project Gutenberg Literary Archive Foundation is a non-profit 501(c)(3) educational corporation organized under the laws of the state of Mississippi and granted tax exempt status

by the Internal Revenue Service. The Foundation's EIN or federal tax identification number is 64-6221541. Contributions to the Project Gutenberg Literary Archive Foundation are tax deductible to the full extent permitted by U.S. federal laws and your state's laws.

The Foundation's business office is located at 41 Watchung Plaza #516, Montclair NJ 07042, USA, +1 (862) 621-9288. Email contact links and up to date contact information can be found at the Foundation's website and official page at www.gutenberg.org/contact

Section 4. Information about Donations to the Project Gutenberg Literary Archive Foundation

Project Gutenberg™ depends upon and cannot survive without widespread public support and donations to carry out its mission of increasing the number of public domain and licensed works that can be freely distributed in machine-readable form accessible by the widest array of equipment including outdated equipment. Many small donations (\$1 to \$5,000) are particularly important to maintaining tax exempt status with the IRS.

The Foundation is committed to complying with the laws regulating charities and charitable donations in all 50 states of the United States. Compliance requirements are not uniform and it takes a considerable effort, much paperwork and many fees to meet and keep up with these requirements. We do not solicit donations in locations where we have not received written confirmation of compliance. To SEND DONATIONS or determine the status of compliance for any particular state visit www.gutenberg.org/donate.

While we cannot and do not solicit contributions from states where we have not met the solicitation requirements, we know of no prohibition against accepting unsolicited donations from donors in such states who approach us with offers to donate.

International donations are gratefully accepted, but we cannot make any statements concerning tax treatment of donations received from outside the United States. U.S. laws alone swamp our small staff.

Please check the Project Gutenberg web pages for current donation methods and addresses. Donations are accepted in a number of other ways including checks, online payments and credit card donations. To donate, please visit:
www.gutenberg.org/donate.

Section 5. General Information About Project Gutenberg electronic works

Professor Michael S. Hart was the originator of the Project Gutenberg concept of a library of electronic works that could be freely shared with anyone. For forty years, he produced and distributed Project Gutenberg eBooks with only a loose network of volunteer support.

Project Gutenberg eBooks are often created from several printed editions, all of which are confirmed as not protected by copyright in the U.S. unless a copyright notice is included. Thus, we do not necessarily keep eBooks in compliance with any particular paper edition.

Most people start at our website which has the main PG search facility: www.gutenberg.org.

This website includes information about Project Gutenberg, including how to make donations to the Project Gutenberg Literary Archive Foundation, how to help produce our new eBooks, and how to subscribe to our email newsletter to hear about new eBooks.